

State of Wyoming Corner Record

(In compliance with the **CORNER PERPETUATION AND FILING ACT**, Wyoming Statutes, 1997 Section 33-29-140 et. seq., and the Rules and Regulations of the Board of Professional Engineers and Professional Land Surveyors)

Reverse side of this form may be used if more space is needed.

Record of original survey and citation of source of historical information (if corner is lost or obliterated). Description of corner monumentation evidence found and/or monument and accessories established to perpetuate the location of this corner. Sketch of relative location of monument, accessories, and reference points with course and distance to adjacent corner(s) (if determined in this survey). Method and rationale for reestablishment of lost or obliterated corner.

LOCATION: Quarter Corner common to Section 2 and Section 1, Township 14 North, Range 66 West, 6th P.M., Laramie County, Wyoming.

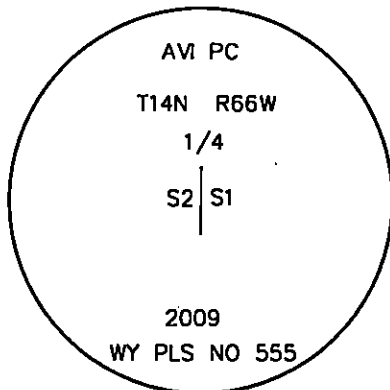
HISTORICAL DATA: Per the subdivision line field notes for Township 14 North, Range 66 West of the 6th P.M., in the Territory of Wyoming, surveyed by John B. Thomas, under his joint contract with Henry G. Hay, dated July 16, 1870. Survey commenced August 17, 1870. Survey ended August 30, 1870. "Set limestone 15x12x4 for 1/4 section corner" (Ref. Vol. 3, 1870, page 245.)

EVIDENCE FOUND: Found 3.25" aluminum cap atop #5 rebar, 0.6' above ground level, 10' East of north/south fence line.

MONUMENT & ACCESSORIES ESTABLISHED:

LAT / LONG: 41°12'38.048"N, 104°43'55.181"W (NAD 83)

Monument Sketch



RECP #: 683723
RECORDED 5/5/2016 AT 11:32 AM BK# 2498 PG# 719
Debra K. Lathrop, CLERK OF LARAMIE COUNTY, WY PAGE 1 OF 2

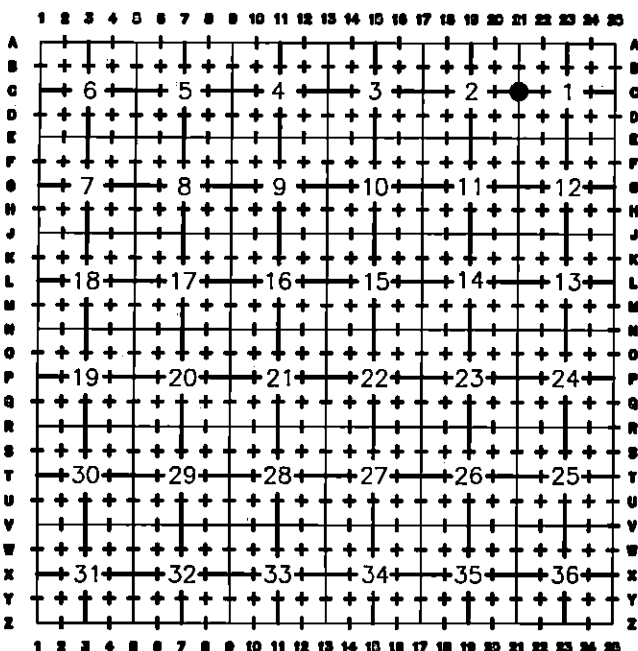
SEE REVERSE FOR CORNER TIES.

Date of Field Work: 02/18/2016

Office Reference: 2167.00

Point #: 153

Cross Index Plat



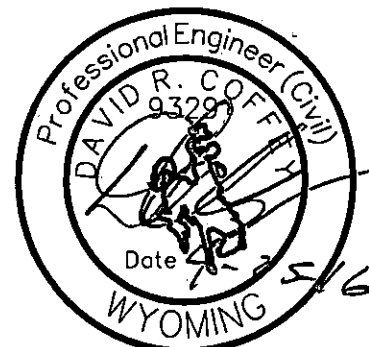
COFFEY

ENGINEERING & SURVEYING

902 South 3rd St., Laramie, WY 82070
[P] 307-742-7425 [F] 307-742-7403

This corner record was prepared by me or under my direction and supervision.

SEAL & SIGNATURE



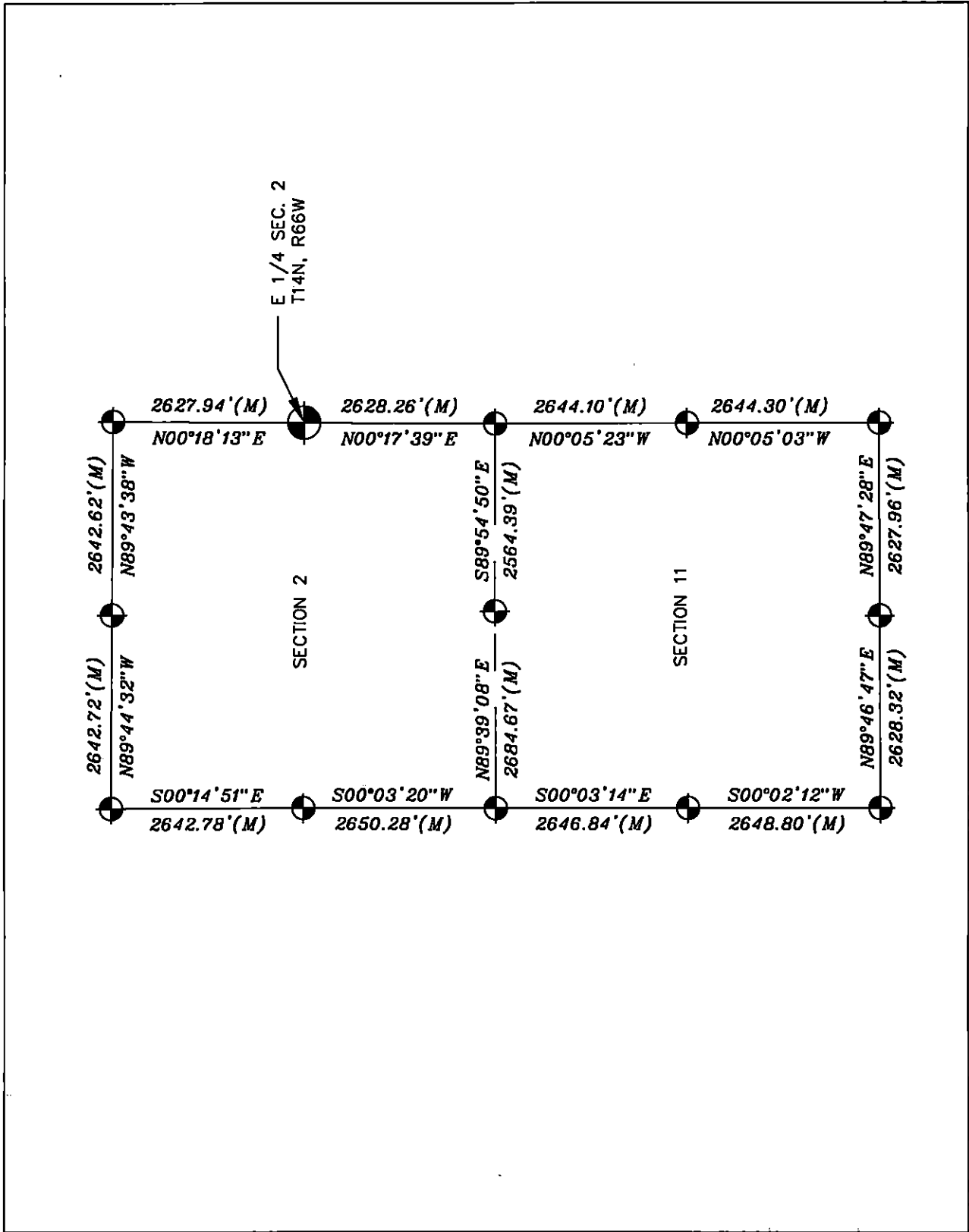
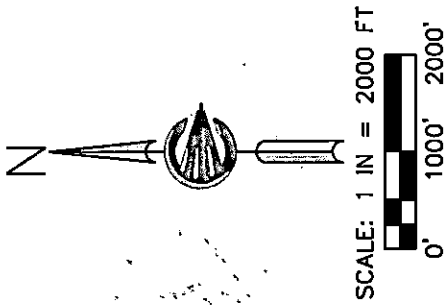
David R. Coffey, LS #9329



Corner Name East Quarter Corner Section 02, T 14 N, R 66 W, 6th P.M.

County: Laramie Wyoming

Cross-Index No.: C-21

SBRPEPLS/PLSW: March 1994; PLSW January 1998



 FOUND PUBLIC LAND SYSTEM MONUMENT
 REFERENCED FOUND PUBLIC SURVEY SYSTEM MONUMENT

